

What we know?

Knowledge of assets to attack

Username/pass word of phished user

Scenario 2 Goal: Tamper Data Received From CubeSAT

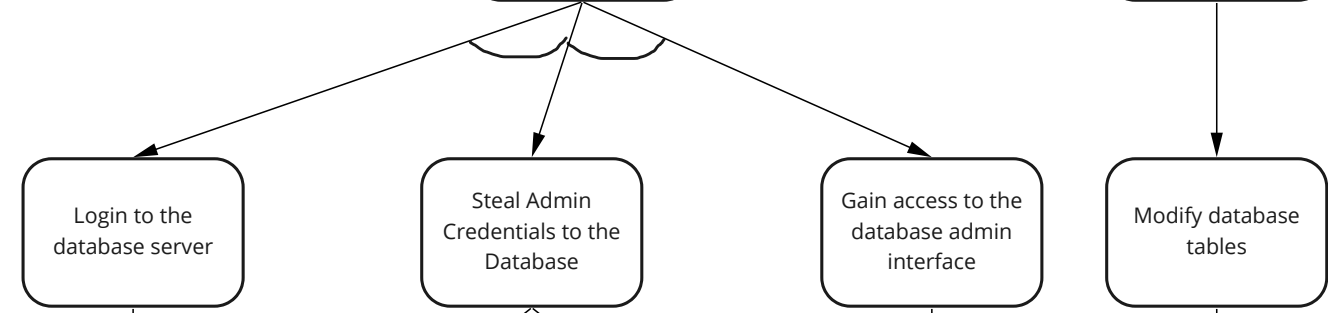
When in the process?



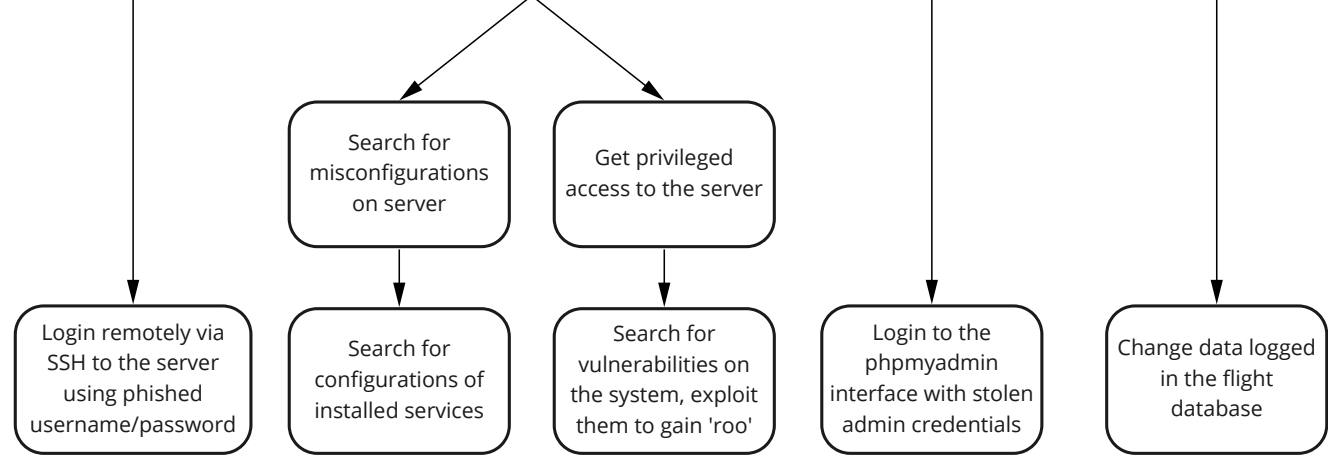
Where do you attack?



What is the action?



How do you achieve the action?



Outcome: System access an non-privileged user

Outcome: Possible misconfiguration that allows reading config files

Outcome: Admin access to database

Outcome: Corruption of Data